

Simay Kışlaođlu

Simay Kışlaođlu

Artworks

2026





Artist Statement

I am a portrait painter, and painting has always been a part of my life. I've never stopped, and I don't think I ever could because creating art is what keeps me alive. It gives me purpose. I'm someone who can't sit still; I need to keep moving, keep producing, and keep making something meaningful. Painting allows me to do that.

I believe we all want to leave something behind to leave a trace of who we are. For me, painting is the way I hope to do that. Even after I'm gone, I want my work to remain, to speak for me, and to carry a part of me into the future. It's my way of carving my name into the world.

Art is also about connection. A painting can speak directly to people without using any words. It hangs on a wall, and the more you look at it, the more you feel something. It can warm your heart, bring you comfort, or take you deeper into your thoughts. That emotional connection is what I love to create through my work.

I work primarily with oil paint, a medium I love for its richness and depth. I'm especially inspired by the techniques of the Renaissance and Baroque masters their use of light, shadow, and dramatic contrast. The Italian way of painting, with its deep shadows and layered emotion, has had a strong influence on me. I believe these elements give portraits a sense of soul, mystery and deeper meaning.

I'm always growing, always learning and that journey will never end. But what matters most is that I will keep painting, no matter what. Because this is who I am, and this is what I'm meant to. Painting teaches me not only how to see but how to live. As Seneca said: "As long as you live, keep learning how to live."



The 64 Series



Queen Over Knight

100×150 cm, Oil on Canvas.

There is a difference between movement and power.

In *Queen Over Knight*, Simay Kislaoglu explores quiet authority through the language of chess. A woman stands still, calm, and self-possessed. Above her rises the knight symbol of action, impulse, and unpredictability.

The knight moves fast.
The queen sees far.

Although the knight is placed higher, the woman carries the presence of the queen the most powerful figure on the board. This contrast is intentional. Height is not dominance. Motion is not control.

The painting reflects a simple truth about life:
real power is not loud. It is aware.

Part of the artist's 64 Series, inspired by the chessboard's sixty-four squares, the work examines strategy, hierarchy, and inner discipline—the silent forces that shape decisions and destinies. There is no battle here. Only mastery.

“Power is not in rushing forward.
Power is in knowing when not to move.”

The 64 Series



The Red Queen

120×180 cm, Oil on Canvas.

“It takes all the running you can do, to keep in the same place.”
— Lewis Carroll, *Through the Looking-Glass*

This line, spoken by the Red Queen in Lewis Carroll’s chess-structured novel, captures the paradox of movement within systems: effort does not guarantee progress, and motion without strategy leads only to repetition.

Kıslaoğlu draws from this literary foundation to position the Red Queen not as a decorative monarch, but as a symbol of disciplined authority. Within Carroll’s world, identity and power are defined by placement on the board by rules, rank, and consequence. The queen embodies command inside constraint.

The painting translates this philosophy into a contemporary visual language. The figure’s composed posture and direct gaze suggest awareness rather than impulse. Strength is rendered through restraint; dominance through precision. The geometric costume echoes the chessboard’s architecture, reinforcing themes of structure, hierarchy, and calculated motion. The knight emblem signals tactical intelligence power exercised with foresight.

Rather than celebrating speed or spectacle, *The Red Queen* reflects on strategic endurance: the capacity to move deliberately within rigid systems while maintaining presence and control.





The 64 Series



Checkmate

120×180 cm, Oil on Canvas.

Some endings arrive quietly.

Checkmate is not a painting about loud victory. It is about the moment when the mind becomes still when the decision is already made, and nothing needs to be proven. The figure feels calm, strong, and present. She does not fight for power; she carries it.

The chessboard is not only a pattern here. It becomes a world. It wraps the body and fills the space, like a life built on strategy and consequences.

The chess pieces float like her private thoughts. They stand for decisions, memories, and fate things that stay with us even when we stay silent. Nothing is falling. Nothing is noisy. Everything is held in control, like a mind that has already chosen its path. This is not a loud victory. It is a quiet ending.

For the first time, I moved away from my usual reds and blues and worked with brownish, earth tones. This new palette was a challenge but it gave the painting a deeper silence. The colors feel grounded, mature, and timeless.

Checkmate belongs to my 64 Series, where chess becomes a symbol of the inner life: choice, patience, discipline, and the cost of every move.

The 64 Series



Sancta Potentia

100×150 cm, Oil on Canvas.

Sancta Potentia means holy power a power that is pure.

This is not power that fights.
Not power that proves.
It is power that stays clean.

Her face is calm and direct. The halo behind her head is a circle of clarity a symbol of something untouched. The gold is not luxury here; it is purity. It is the feeling of discipline, devotion and inner order.

The figure stands like an icon, but the message is human: when the world becomes noisy, purity becomes strength. To remain uncorrupted is a form of victory.

This painting is about light that does not beg for attention.
It simply exists and that is why it feels sacred.



The 64 Series



Cinders and Queens

150×150 cm, Oil on Canvas.

“Where power rises from ashes” connects the work to the phoenix myth, a symbol of rebirth through fire. It speaks about resilience, the strength not only to survive hardship, but to turn it into something greater.

The message is clear: even from total collapse, something strong and majestic can be born. True power doesn't come from ease; it is shaped and forged in struggle. As Nietzsche reminds us, “What does not kill me makes me stronger.”

The 64 Series



Snow White

70×120 cm, Oil on Canvas.

I named her Snow White because her face carries that soft, pale light that feels both calm and strong at the same time. Her gaze is bewitching not in a loud way, but in the way someone looks when they've lived through things and learned to stand with quiet dignity.

She has power, but she doesn't perform it.
She holds it.

The chess pattern surrounding her is more than design; it reflects the reality of life constant decisions, challenges, and the emotional weight we carry. She stands within it all, steady and composed, even when the world feels heavy.

This portrait is about a woman who doesn't give up.
A woman who protects her softness without losing her strength.
A woman who keeps going.

Snow White is not just a painting; she is a reminder of resilience the quiet, inner kind that lasts.



The 64 Series



Apatheia

100×150 cm, Oil on Canvas.

In this work, Simay Kışlaoğlu explores the idea of calm as a form of strength. The figure carries two gazes: one lowered inward, and one meeting the viewer with quiet confidence. The bold geometric forms and crown-like silhouette create a sense of armour, suggesting a woman who protects her inner world while standing firmly in her outer one. "Apatheia" brings together vulnerability and control, showing how both can exist within a single face.

A handwritten signature in white ink, reading "Simay Kışlaoğlu".

Layers of Reign



Moonlit Sultana

90x120 cm, Oil on Silk Fabric.

A contemporary homage to classical Orientalist portraiture, Moonlit Sultana is deeply inspired by the works of Jean-Léon Gérôme, whose mastery in capturing the richness of the Sultan era resonates with my artistic vision. Through intricate layers of oil paint on silk fabric, I seek to evoke the same timeless elegance and historical depth found in Gérôme's depictions of the East.

The unique integration of silk fabric adds a tactile dimension, enhancing the illusion of luxury and opulence elements that defined the grandeur of the era. This piece is not just a portrait; it is a bridge between past and present, where art, history, and craftsmanship merge to bring the mystique of the Sultanate to life.

A handwritten signature in black ink, appearing to read 'Amay' followed by a stylized flourish.



Femme fatale



Alice

90x120 cm, Oil on Canvas.

Alice is an oil painting inspired by Alice in Wonderland. This piece, 90 x 120 cm, brings together imagination and elegance. Her bold look and the chessboard like pattern on her outfit reflect the mix of adventure and mystery found in Wonderland.

This painting is all about curiosity, beauty, and stepping into the unknown. It's a work of art that reminds us to dream big and explore new worlds.

A stylized signature in black ink, likely the artist's name, Simon Ståhl.



A small signature in the bottom right corner of the painting, likely the artist's name, Simon Ståhl.



Femme Fatale



Alessandra

90×120 cm, Oil on Canvas.

Her name whispers of ancient strength, meaning “defender of the people,” yet her gaze is anything but loud. Instead, she watches with quiet intensity, her eyes holding secrets known only to the heart.

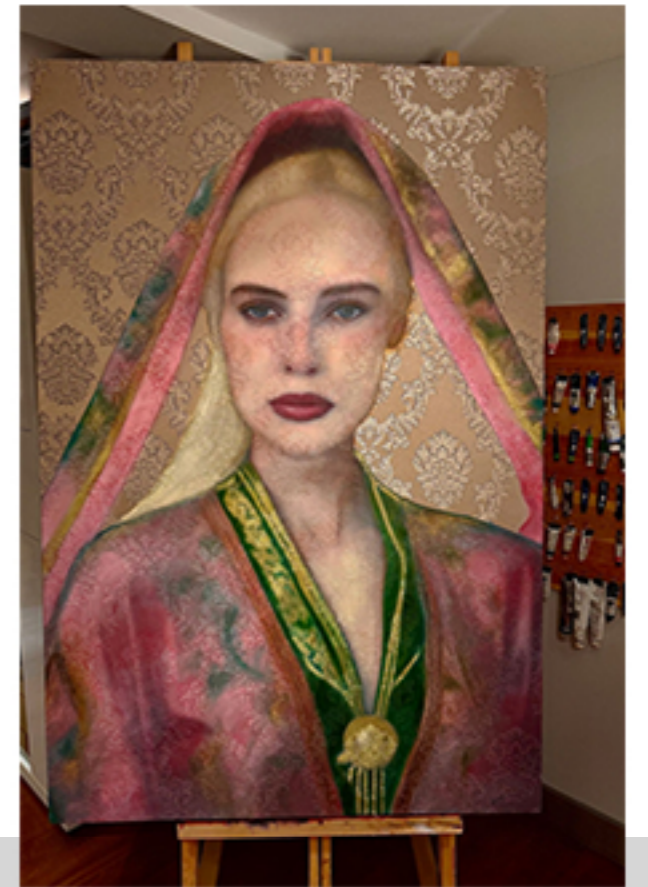
Surrounding her is a mosaic of warm tones, as if fragments of memory, heritage, and time itself have circled around her, protecting her, honoring her. These geometric patterns blend old-world artistry with the abstraction of modern thought, symbolizing the many layers of identity she carries. She is both past and present, an embodiment of the delicate balance between strength and grace.

Alessandra is more than a face; she is a story woven into canvas, a soul wrapped in the colors of the earth. The soft folds of her garment fall like whispered promises,





Layers of Reign



The Heir

120×180 cm, Oil on Silk Fabric.

The Heir carries the echo of an empire not through crowns or victory, but through memory.

Her face is woven with patterns, like the faded walls of an old palace, holding stories no one dares to speak.

She stands for every woman who kept dynasties alive, not by power, but by patience, silence, and endurance.

She is the unseen foundation the breath behind the throne.

This work is a reflection on inheritance:
Not of land or title, but of blood, history, and the weight of belonging.

Femme Fatale



Icebreaker

90×120 cm, Oil on Silk Fabric.

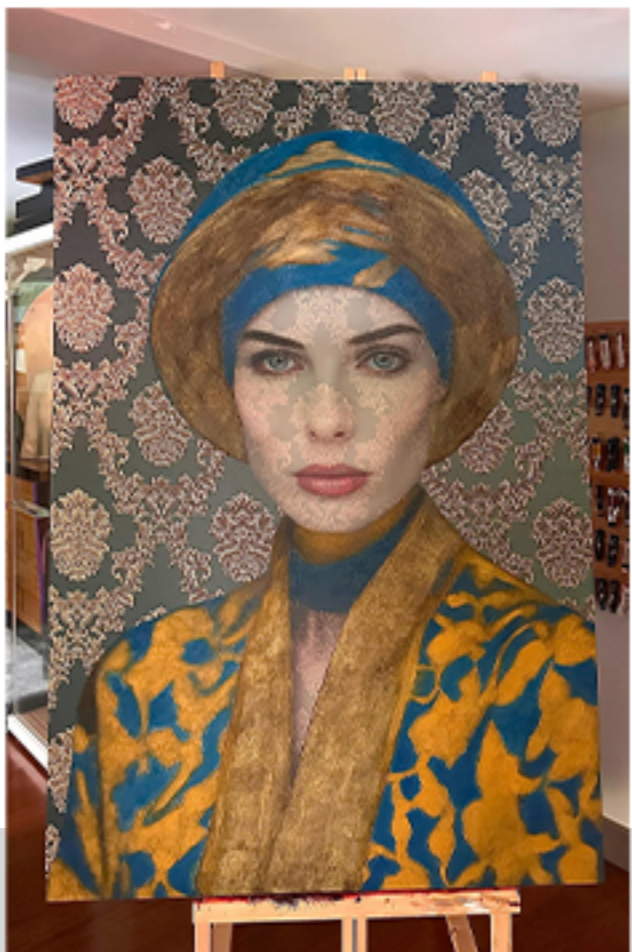
Icebreaker is a painting about strength, beauty, and change. The subject's calm but powerful gaze makes you stop and reflect. Her pale skin and flowing blonde hair remind us of winter, but the soft golden tones bring a feeling of warmth and hope, like the sun melting the ice.

This piece is about breaking through barriers those moments in life when we push past fear, sadness, or doubt and let light in. With its mix of cold and warm colors, Icebreaker invites you to feel both the stillness and the strength of transformation.



Sindy

Layers of Reign



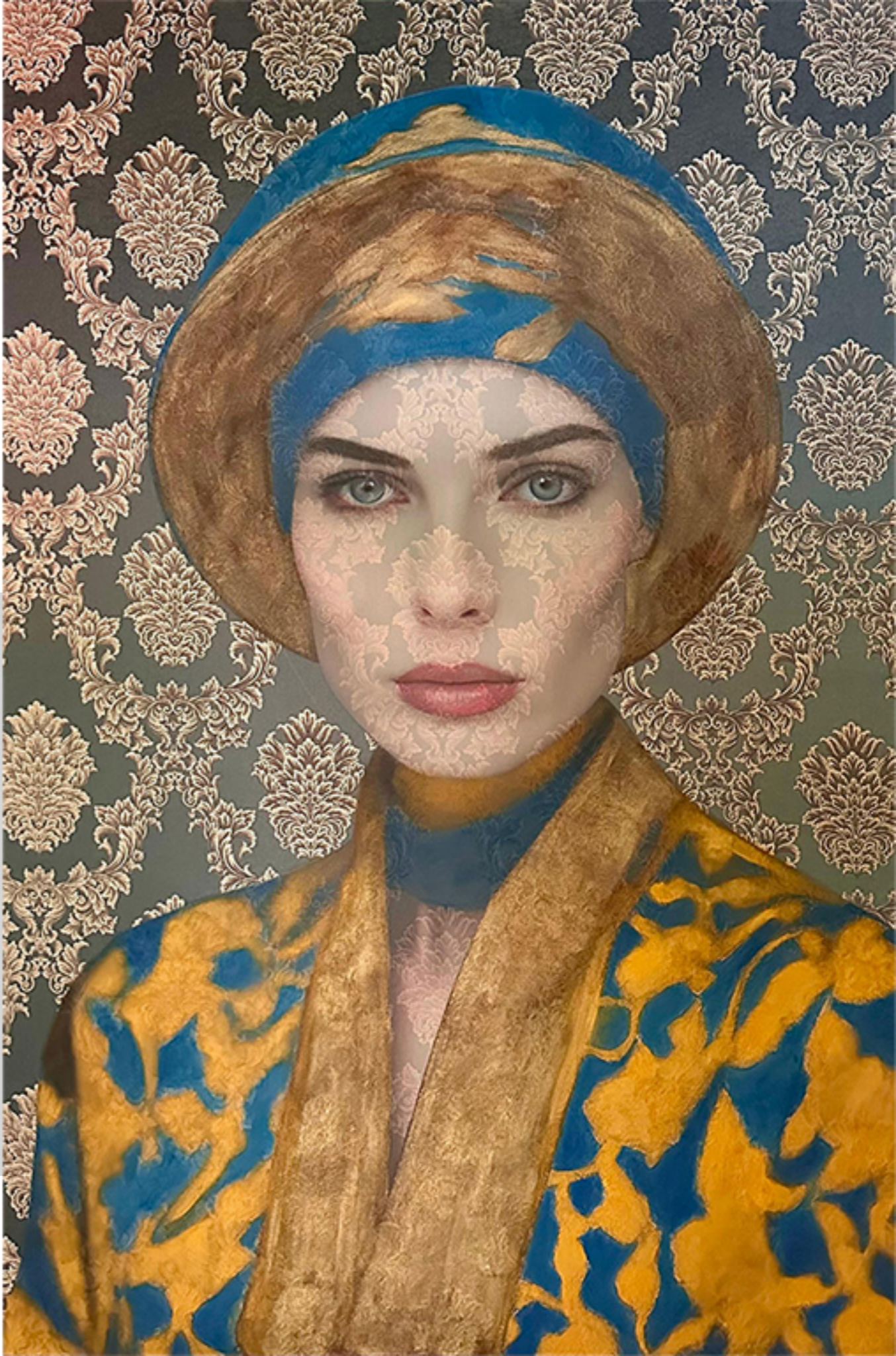
Blue

120×180 cm, Oil on Silk Fabric.

This painting carries a quiet influence from the Baroque—the richness of fabric, the weight of gold, the stillness before emotion moves.

I wasn't trying to recreate a style. I followed a feeling. The blue came first. Then her face. Then everything slowed down.

There's no story here, only presence. A moment held in light, color, and silence.





Femme Fatale



Carnevale

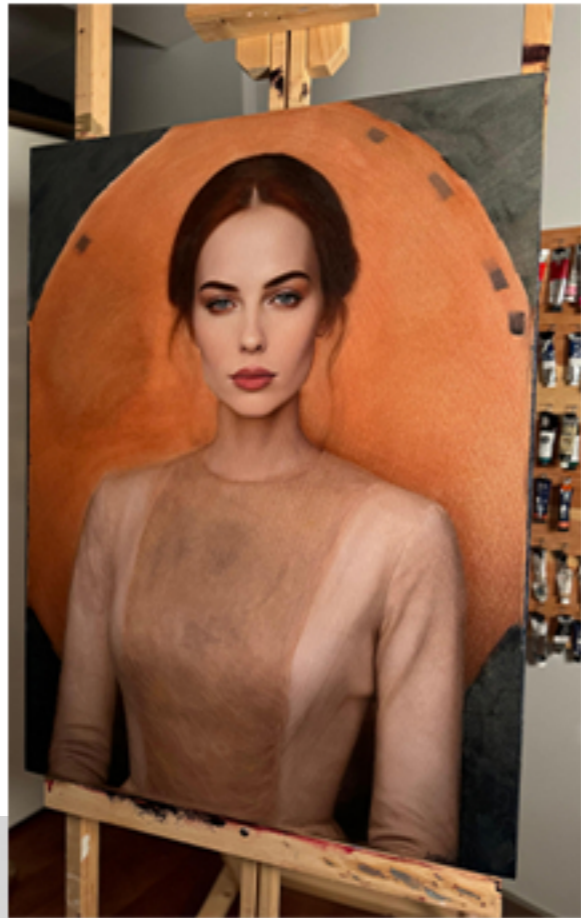
90×90 cm, Oil on Canvas.

Carnevale captures the vibrant essence of celebration and self-expression. Through bold hues of red and pink, this piece brings to life the energy and allure of a festival atmosphere. The subject's intense gaze invites viewers to immerse themselves in the colors and emotions of a carnevale, where joy and mystery intertwine.

Inspired by the spirit of festivity, Carnevale is a visual celebration that blends elegance with a playful touch of drama. The striking color palette of reds, pinks, and hints of turquoise evokes a lively scene under the open sky, creating a feeling of togetherness and freedom.



Femme Fatale



Eleanor

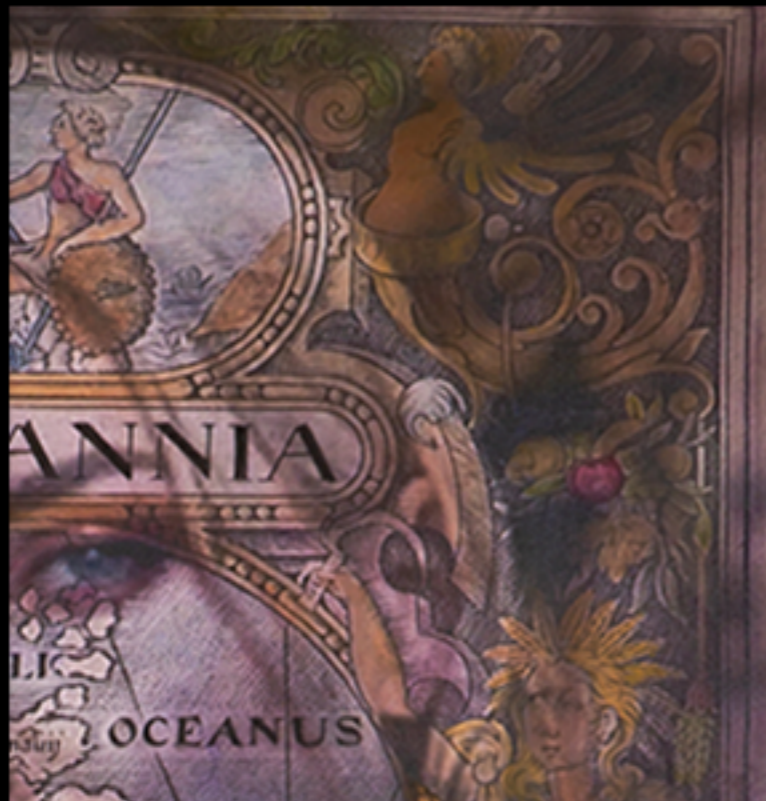
75×100 cm, Oil on Canvas.

Eleanor brings a modern twist to the Baroque era's dramatic style. The rich, warm tones and soft shadows around her face echo the depth and emotion of Baroque portraits. The circular backdrop behind her, reminiscent of a glowing halo, highlights her presence, giving her an almost sacred quality.

Inspired by the Baroque period's focus on strong contrasts and expressive figures, Eleanor represents quiet power and resilience. Her calm yet intense expression invites the viewer to reflect on the timeless strength of women throughout history. This painting honors the spirit of Baroque art, blending classic beauty with a contemporary sense of inner strength.

A stylized signature in black ink, reading "Simon Stålenhagen".

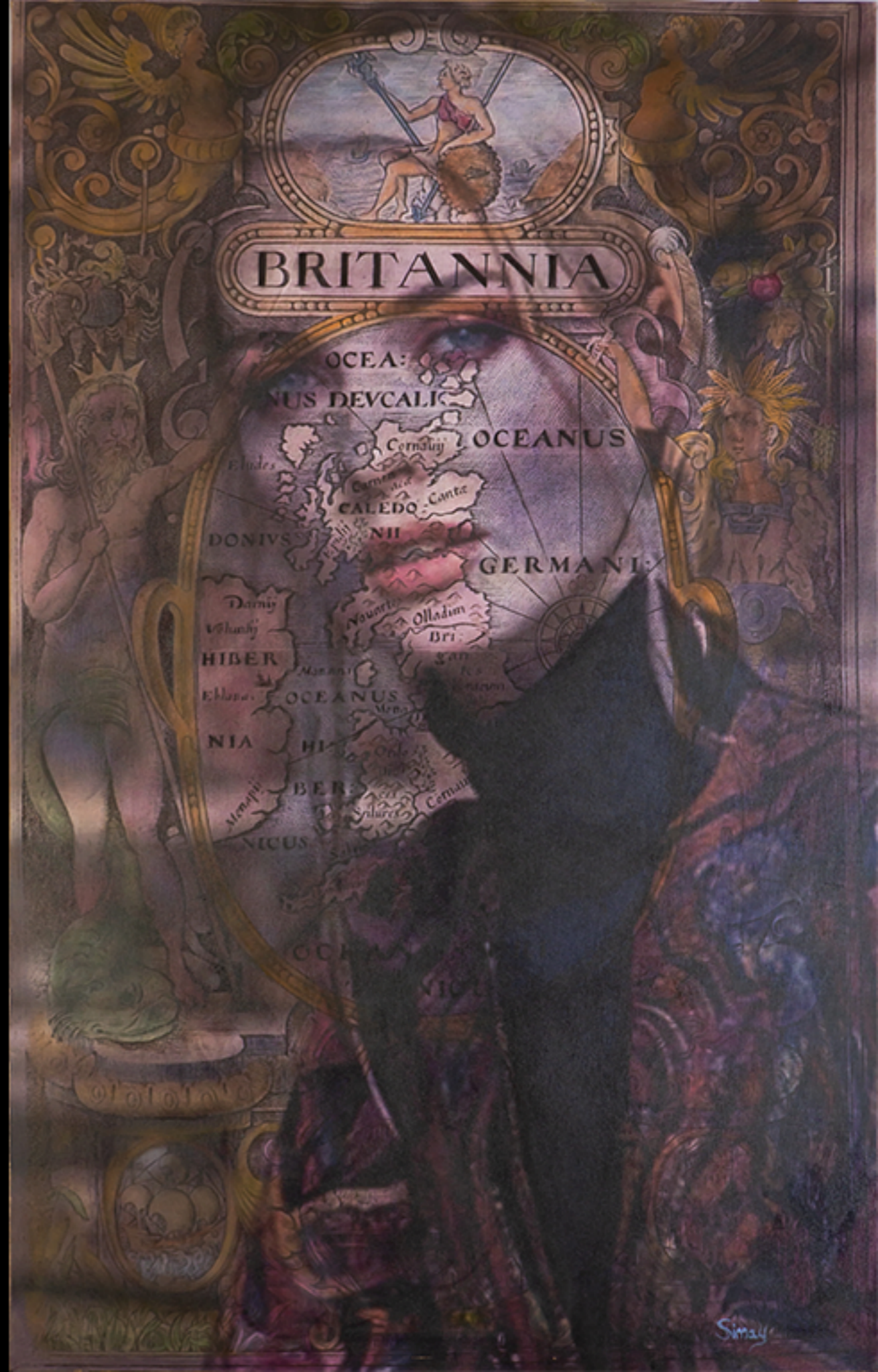




Britannia

85×135 cm, Oil on Canvas.

In "Britannia," a captivating oil painting measuring 85×135 cm, the artist intricately weaves together elements inspired by William Hole's iconic portrayal of the Map of Britannia from London in 1607. At the heart of the composition, Neptune and Ceres stand sentinel on either side of a central roundel adorned with a meticulously rendered map of the British Isles, meticulously depicting the eastern part of Ireland. A resplendent Britannia, seated atop the page, emerges as a poignant symbol of British allegory, paying homage to one of the earliest printed depictions of this iconic figure. Surrounding the central imagery, the painting offers a rich tapestry of smaller details, including a ship, Winchester Cathedral, Stonehenge, and a Roman Bath, each meticulously rendered to evoke a sense of historical and cultural depth. Through masterful brushwork and meticulous attention to detail, the artist invites viewers into a visual journey that celebrates the rich tapestry of British history and heritage and surrounding the central imagery, the painting offers a rich mosaic of smaller details...



Simay





Femme Fatale



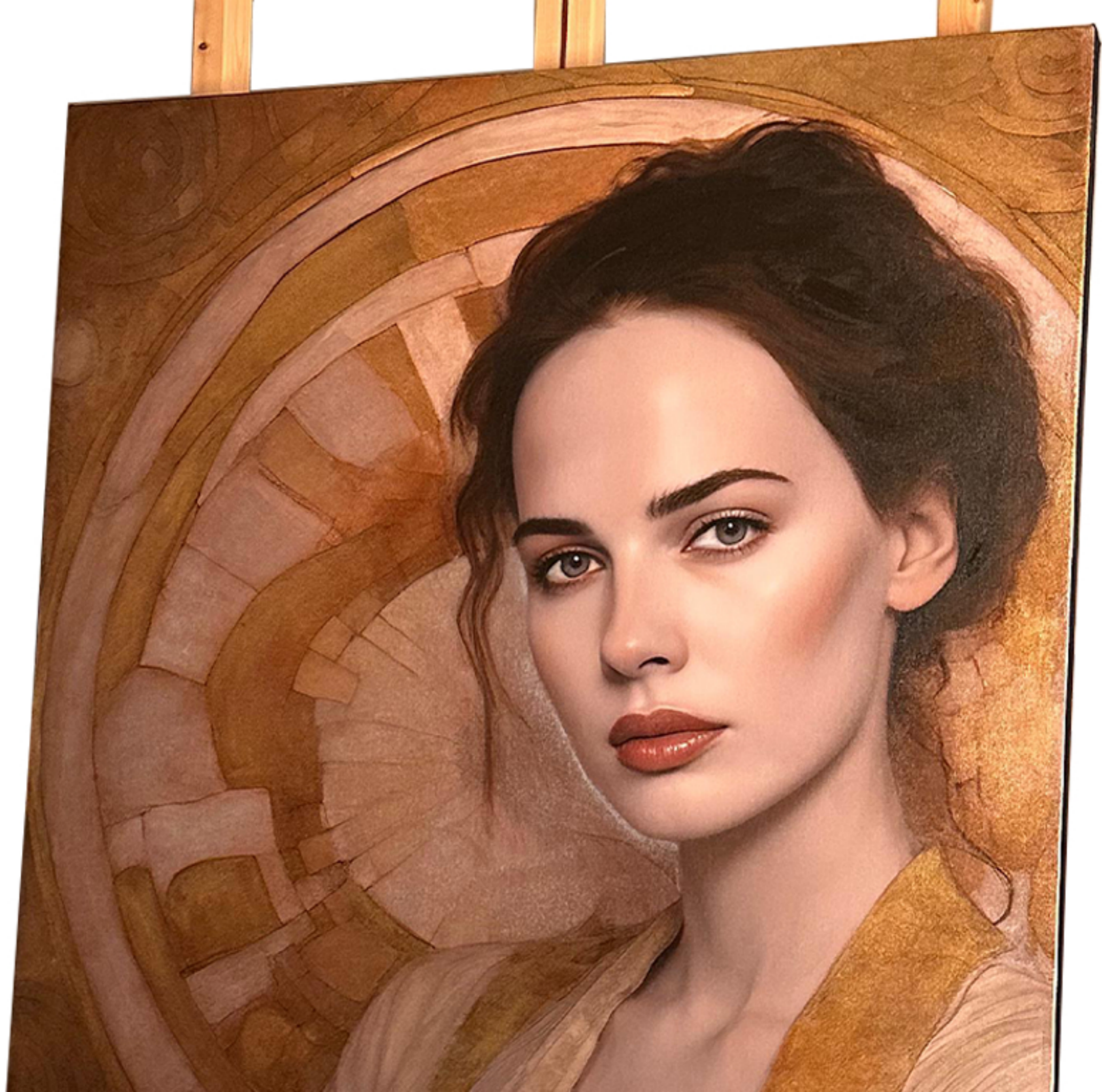
Perla

90x120 cm, Oil on Canvas.

In Perla, the artist weaves together the opulent tones of the Baroque era with an aura of quiet sadness, embodied in the subject's luminous, pearl-like complexion. Measuring 90x120cm, the piece seems to reach beyond its canvas, inviting viewers into a nearly three-dimensional experience. The subject's tranquil gaze draws the audience in, creating an intimate encounter that deepens the longer one lingers.

The delicate use of baroque colors paired with a soft, pearlescent white enhances her purity and vulnerability, casting an almost ethereal light upon her. Perla is more than a portrait; it's a haunting connection between viewer and subject a wordless conversation that feels alive, as though she breathes within the same space, offering solace and reflection in her serene expression.

This description emphasizes the sense of purity, tranquility, and emotional depth you've captured in Perla.



Femme Fatale



Vittoria

90×100 cm, Oil on Canvas.

Vittoria is a portrait of elegance and quiet strength. Her steady gaze invites you to see beyond the surface, to a place where beauty and resilience come together. The rich patterns on her clothes tell stories, each color and line representing the layers of life's experiences. With a warm, golden background, she seems to exist between reality and a dream, reminding us that true beauty comes from inner strength and silent victories.

This painting isn't just a portrait it's a journey into grace and the quiet power that lives within us all.

A handwritten signature in black ink, likely the artist's name, written in a cursive style.





Baroque Serenades



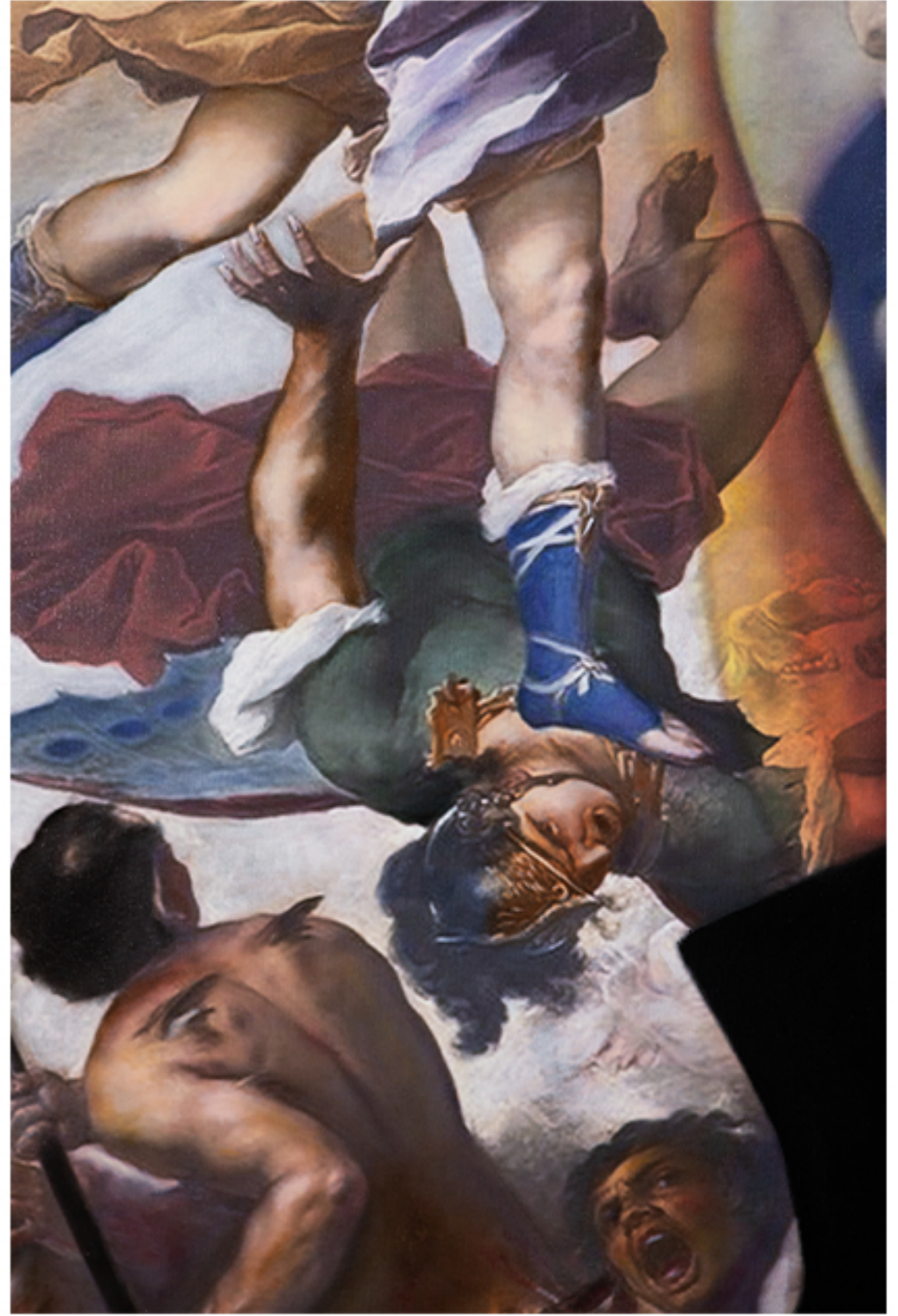
Asteria

95×135 cm, Oil on Canvas.

In this artwork, my intention is to convey a powerful message: to end wars and embrace unity. The woman in the portrait serves as a messenger, urging us to shift from conflict to cohesion. Let's abandon the path of anger and strife; instead, let us unite for a better future. May this painting inspire a collective call for peace and solidarity.

Asteria, illuminates paths in the darkness of the night.

Simay



Baroque Serenades



Alegria

83x140 cm, Oil on Canvas.

Alegria – A Timeless Ode to Italian Renaissance Art

In the heart of 'Alegria' beats the spirit of the Italian Renaissance, an era of artistic brilliance that left a profound mark on the world. But what made these Italian paintings so universally renowned?

The Italian Renaissance, a cultural rebirth spanning the 14th to 17th centuries, was a time of groundbreaking innovation and intellectual awakening. Humanism, a philosophical movement that celebrated the individual, human emotions, and the beauty of the human body, infused their art with a timeless, emotional quality. These paintings spoke to the human experience, transcending the limits of time.

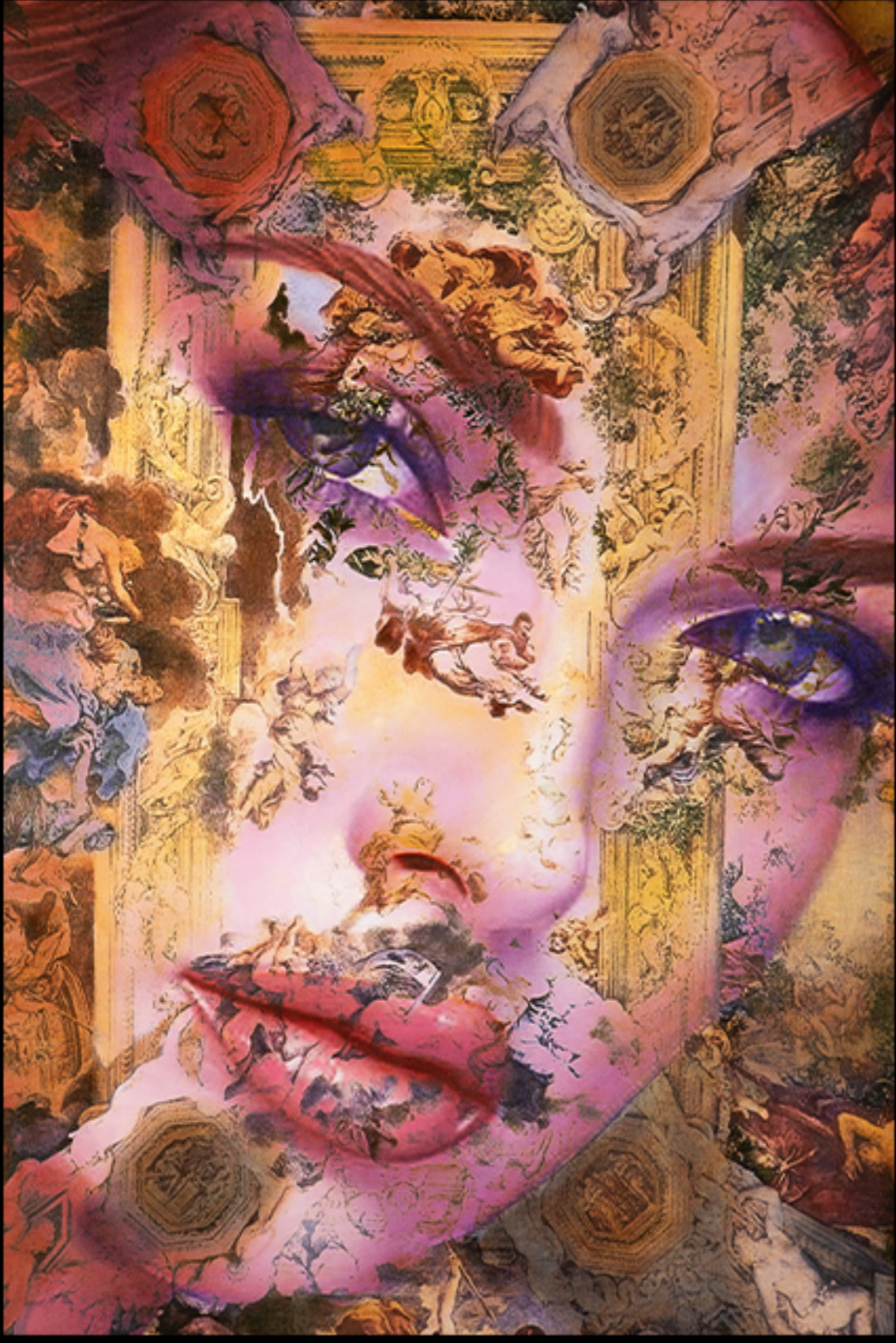
The patronage of the powerful figures led to the creation of grand frescoes, altarpieces, and portraits, which continue to captivate audiences. Italian Renaissance art often delved into classical themes, historical events, and mythological narratives. These universal subjects added intellectual depth to the art, creating connections that have endured through the ages.

The artists of this era were masters not only of their craft but also of materials, using high-quality pigments and meticulous craftsmanship. Their works not only dazzled upon creation but also preserved their vibrancy and beauty through centuries. Artistic communities in Italian cities like Florence and Venice fostered an atmosphere of collaboration and innovation, pushing each artist to greater heights. This collective spirit accelerated the advancement of art during the Renaissance.

Through 'Alegria,' I pay homage to the entirety of this remarkable legacy, infusing it with a modern twist. Every brushstroke in my work echoes innovation, humanism, and the enduring beauty of masterful craftsmanship. Moreover, 'Alegria' places the woman and portrait inside the painting itself, bridging the classical and the contemporary. It's a celebration of artistic excellence that has transcended time, still inspiring and resonating in the modern age. Stay tuned for more insights into the creation of 'Alegria' and more pieces from this remarkable collection.



Simay



Baroque Serenades



Paradiso

80×140 cm, Oil on Canvas.

Within 'Paradiso, the Baroque essence unfurls in an intricate dance of Angeles, echoing a bygone era where art and spirituality converged in harmony. This 80×140cm masterpiece beckons with a celestial allure that speaks to the very soul of the Baroque tradition.

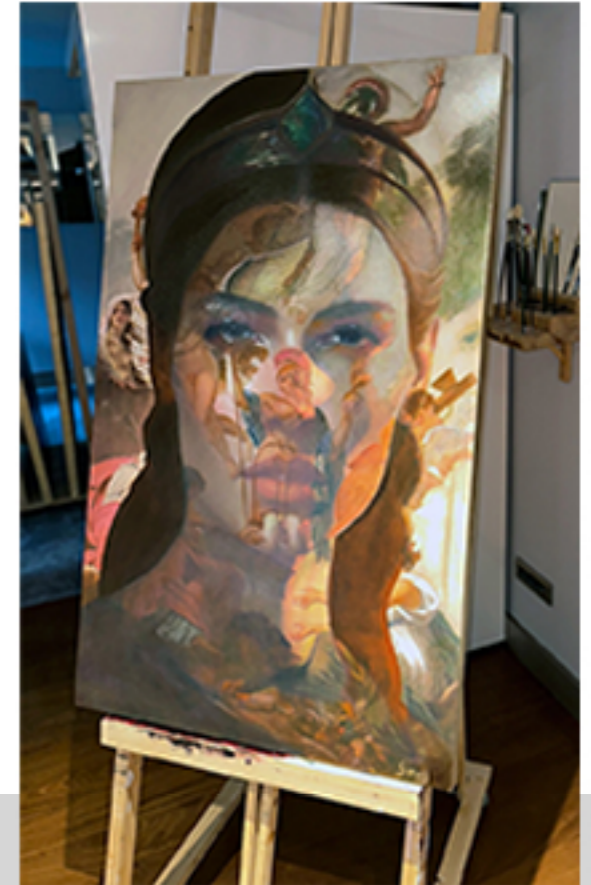
In the brushstrokes, I've woven a tapestry of devotion, each angel a testament to the divine and ethereal. 'Paradiso' is a portal to an age when artists sought to capture the very essence of the divine, inviting you to bask in its timeless glow.

This painting is more than a mere canvas; it's an embodiment of the Baroque's enchanting allure, a piece of history that yearns to adorn your space and captivate your heart. Let 'Paradiso' transport you to a world of artistry, grace, and spirituality, where angels take flight in your imagination. As an artist, it's an honor to offer you a piece of this captivating era.





Baroque Serenades



Warrior Woman

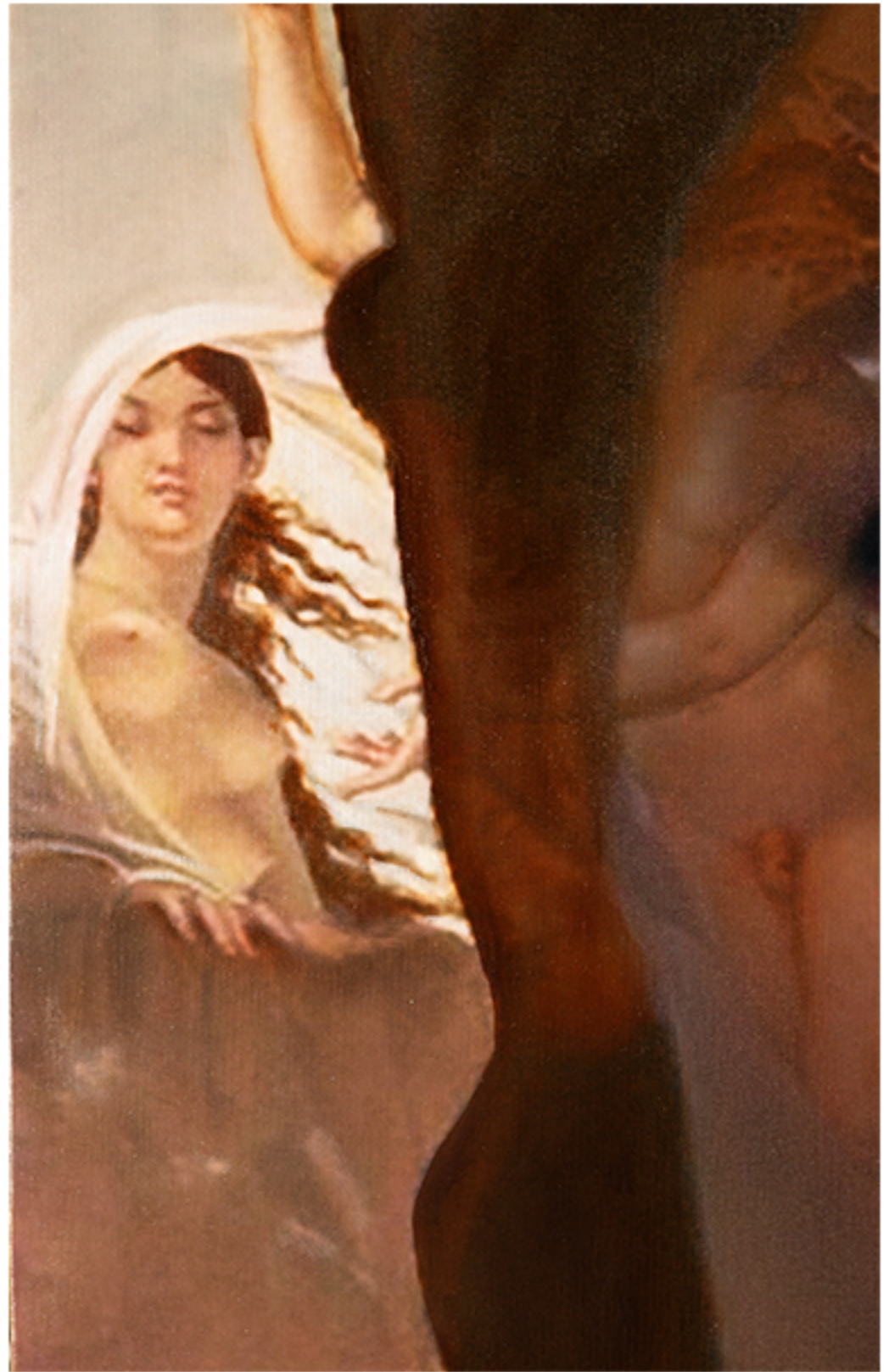
85×135 cm, Oil on Canvas.

In this captivating 85×35 cm oil painting, I have seamlessly blended the techniques of the Renaissance era with the powerful symbolism of woman portrait. The artwork stands as a testament to the indomitable strength inherent in every human being. Each stroke on canvas echoes the message that, regardless of gender, we are all warriors in the journey of life.

It is an exploration of the profound strength that emerges when faced with life's challenges. In a world that constantly demands our resilience, this artwork strives to be a beacon of inspiration, reminding us all that we possess an innate warrior spirit.

As the artist behind this creation, I aspire to be a positive model, encouraging everyone to embrace their inner strength and face life's battles with courage. May this painting serve as a source of empowerment, a reminder that within every brushstroke lies the potential for personal triumph.

Join me in celebrating the strength that unites us all.







Baroque Serenades



The Birth of Venus

140×90 cm, Oil on Canvas.

In my art piece, "I've reimagined the timeless masterpiece by Sandro Botticelli, introducing a new dimension to this iconic creation.

Botticelli's Venus symbolizes purity and beauty emerging from the sea, but my version adds another layer to the story. The introduction of a second lady invites you to explore the duality of human nature. One lady represents the ideals, while the other embodies the complexities of our earthly existence.

This reinterpretation sparks contemplation about the ever-changing nature of beauty, the subjectivity of aesthetics, and the coexistence of perfection and imperfection.

Art has the power to reflect and question, and my "Rebirth of Venus" aims to do just that. Join me in exploring the depths of philosophy and art through this modern twist on a classic masterpiece.

Baroque Serenades



La Vita

105x140 cm, Oil on Canvas.

Presenting 'La Vita,' a monumental masterpiece standing tall at 140x105 cm, a testament to the grandeur of the Baroque era. This canvas comes to life with intricate details, each stroke weaving a tale of angelic beauty and innocence! Art is the bridge that connects the ethereal with the tangible, inviting us to explore the depths of our humanity. Step closer, let your imagination soar, and embrace the essence of 'La Vita!





Femme Fatale



Diotima

110×140 cm, Oil on Canvas.

She is the teacher of Socrates and she is the teacher of love.

Diotima has Socrates agree that everyone always wants good things and happiness to be theirs forever. In that case, everyone would be a lover, but we only call certain people lovers. ...

Socrates and Diotima agree that love is the desire to have the good forever.

Femme Fatale



Divine

110×140 cm, Oil on Canvas.

God placed within women divine qualities of strength, virtue, love...
They are heavenly beautiful.

The monarch butterfly considered to be the king of butterflies and the most beautiful of all butterflies in the world," Panescu says. "They represent strength, endurance, spirituality, trust, sustaining what they believe, transformation, and evolution." This represents women in every angle.



Femme Fatale



Desperado

90x90 cm, Oil on Canvas.

Desperado means desperate. The painter tries to give the message of the sadness of the lady with the eyes gesture of the woman.



A handwritten signature in black ink, which appears to be 'Simy' followed by a stylized flourish.

Femme Fatale



Luna

90×110 cm, Oil on Canvas.

Luna is the Roman goddess of the moon, This lady is as beautiful as the moon.

Fragile, beautiful, immortal...



A stylized, cursive signature in black ink, reading 'Simona J.' with a long horizontal flourish extending to the right.

Femme Fatale



Wonder Woman

90×140 cm, Oil on Canvas.

The artist tries to depict that you are stronger than you believe.
You have greater powers than you know.

A stylized, cursive signature in black ink, likely reading 'Simy' or similar, positioned at the bottom left of the page.



Femme Fatale



Diana

90x90 cm, Oil on Canvas.

Diana is a traditionally feminine name that is said to mean "luminous", "divine", "fertile" or even "perfect". Diana is the Roman goddess of, the moon. The painter exactly think about these feelings when she creates 'Diana'



The Triumph of Galatea's Whisper

90×120 cm, Oil on Canvas.

The Triumph of Galatea's Whisper,' a captivating oil painting measuring 90×120, artfully blends classical myth with contemporary expression. This visual symphony resonates across generations, echoing the enduring power of storytelling—a timeless narrative on a canvas that spans ancient tales to modern interpretations.



Baroque Serenades



Eternal Beauty Amidst Human Strife

85×135 cm, Oil on Canvas.

Nature is pitiless; she never withdraws her flowers, her music, her fragrance and her sunlight, from before human cruelty or suffering. She overwhelms man by the contrast between divine beauty and social hideousness. She spares him nothing of her loveliness, neither wing or butterfly, nor song of bird; in the midst of murder, vengeance, barbarism, he must feel himself watched by holy things; he cannot escape the immense reproach of universal nature and the implacable serenity of the sky. The deformity of human laws is forced to exhibit itself naked amidst the dazzling rays of eternal beauty.

Man breaks and destroys; man lays waste; man kills; but the summer remains summer; the lily remains the lily; and the star remains the star.

As though it said to man, 'Behold my work. and yours.'
Victor Hugo

Femme fatale



Hestia

50x50 cm, Oil on Canvas.

In the Ancient Greek religion, Hestia (/ˈhɛstɪə, ˈhɛstjə/; Greek: Ἑστία, “hearth” or “fireside”) is the virgin goddess of the hearth, the right ordering of domesticity, the family, the home, and the state.



